

Moving Magnet Cartridges

ortofon



The 2M series

Ortofon proudly presents the latest series in its famed line of moving magnet cartridges: The 2M series.

The 2M series, consisting of 2M Red, Blue, Bronze, and Black, were developed in conjunction with Danish designer Møller Jensen Design – the same designer who designed the award winning MC Jubilee and Kontrapunkt series. Inspired by the facets of a diamond, whose contours gracefully trace the grooves on a record's surface, the 2M's handsome elegance establishes a great combination of form and functionality. Of course the 2M isn't just another pretty face. It has been engineered to the highest standards and is congruent with Ortofon's unrelenting commitment to providing the most precise and accurate reproduction possible without coloration.

Ease of Use

The weight and size of the 2M cartridge series has been optimized to fit the most common turntables on the market today. The cartridge body has also been streamlined to provide easy mounting and alignment. The name '2M' was chosen, as it represents the abbreviation for moving magnet - MM. Moving magnet cartridges provide excellent compatibility in an assortment of playback systems and with a wide variety of phono preamps.

Advancements in Sound

The 2M series of cartridges feature Ortofon's trademark split pole pins, an invention which enables moving magnet cartridges to have a flat frequency response, as with a moving coil cartridge. Split pole pins were invented by Ortofon, and were originally presented in the 500 series and Super OM series. The 2M Red and 2M Blue both use an improved engine, which provides an increased output of 5.5mV.

The cartridge body used for the 2M Bronze and 2M Black is manufactured from a newly-developed Noryl plastic/glass combination, a revolutionary material which ensures high rigidity while eliminating unwanted resonances. The 2M Bronze and 2M Black use a special upgraded engine, featuring split pole pins with a silver plated copper wire.

Stylus Types

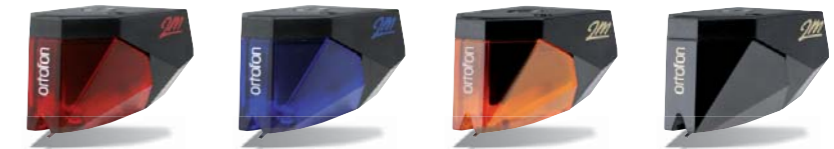
All of the 2M cartridges feature diamonds which are polished to the highest standards in the industry. The 2M Red features a tipped elliptical diamond, while the 2M Blue features a nude elliptical diamond.

The 2M Bronze features a nude Fine Line diamond stylus, which is particularly suited for demanding applications. The slim profile of the Fine Line stylus will track even the highest frequency information, making it a must for discerning listeners. Additionally, its larger footprint ensures reduced distortion and record wear.

The 2M Black is the new moving magnet flagship from Ortofon. The 2M black is graced with a Shibata diamond stylus – the same diamond as on the acclaimed MC Jubilee. Its slim, highly polished profile allows an exceedingly wide contact area to the groove walls and ensures notably detailed reproduction throughout the spectrum, including even the most high frequency groove information. Users of the 2M Black will enjoy the benefit of impeccable sound quality, along with reduced record & stylus wear and reduced distortion and phase error as a result of the diamond's improved tracking geometry.

The 2M series has interchangeable stylus units, which are readily available. 2M series styli are engineered for a tight fit to minimize coupled vibrations, thereby optimizing sound reproduction.

2M



TECHNICAL DATA	2M Red	2M Blue	2M Bronze	2M Black
Output voltage at 1000 Hz, 5cm/sec.	5,5 mV	5,5 mV	5 mV	5 mV
Channel balance at 1 kHz	1,5 dB	1,5 dB	1 dB	1 dB
Channel separation at 1 kHz	22 dB	25 dB	26 dB	26 dB
Channel separation at 15 kHz	15 dB	15 dB	15 dB	15 dB
Frequency range at -3dB	20-22.000 Hz	20-25.000 Hz	20-29.000 Hz	20-31.000 Hz
Frequency response	20-20.000 Hz + 3 / - 1 dB	20-20.000 + 2 / - 1 dB	20-20.000 + 2 / - 0 dB	20-20.000 + 2 / - 0 dB
Tracking ability at 315Hz at recommended tracking force	70 µm	80 µm	80 µm	80 µm
Compliance, dynamic, lateral	20 µm/mN	20 µm/mN	22 µm/mN	22 µm/mN
Stylus type	Elliptical	Nude Elliptical	Nude Fine Line	Nude Shibata
Stylus tip radius	r/R 8/18 µm	r/R 8/18 µm	r/R 8/40 µm	r/R 6/50 µm
Tracking force range	1,6-2,0g (16-20 mN)	1,6-2,0g (16-20 mN)	1,4-1,7g (14-17 mN)	1,4-1,7g (14-17 mN)
Tracking force, recommended	1,8 g (18 mN)	1,8 g (18 mN)	1,5 g (15 mN)	1,5 g (15 mN)
Tracking angle	20°	20°	20°	20°
Internal impedance, DC resistance	1,3 kOhm	1,3 kOhm	1,2 kOhm	1,2 kOhm
Internal inductance	700 mH	700 mH	630 mH	630 mH
Recommended load resistance	47 kOhm	47 kOhm	47 kOhm	47 kOhm
Recommended load capacitance	150-300 pF	150-300 pF	150-300 pF	150-300 pF
Cartridge colour, body/stylus	Black/Red	Black/Blue	Black/Bronze	Black/Black
Cartridge weight	7,2 g	7,2 g	7,2 g	7,2 g
Replacement stylus unit	2M Red	2M Blue	2M Bronze	2M Black

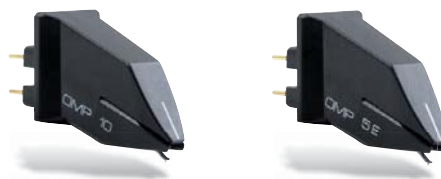


Ortofon OM



TECHNICAL DATA	OM 5E	OM D25M	OM 78
Output voltage at 1000 Hz, 5cm/sec.	4 mV	4 mV, Lateral (mono)	4 mV, Lateral (mono)
Channel balance at 1 kHz	2 dB		
Channel separation at 1 kHz	22 dB		
Channel separation at 15 kHz	15 dB		
Frequency range at - 3dB	20-25.000 Hz	20-20.000 Hz	20-15.000 Hz
Frequency response	20-20.000 Hz \pm 2 dB	20-18.000 + 3 / - 2 dB	
Tracking ability at 315Hz at recommended tracking force	65 μ m	70 μ m	70 μ m
Compliance, dynamic, lateral	20 μ m/mN	7 μ m/mN	15 μ m/mN
Stylus type	Elliptical	Spherical	Spherical
Stylus tip radius	r/R 8/18 μ m	r/R 25 μ m	r/R 65 μ m
Tracking force range	1,5-2,0 g (15-20 mN)	3,0-5,0 g (30-50 mN)	1,8-2,5 g (18-25 mN)
Tracking force, recommended	1,75 g (17,5 mN)	4,0 g (40 mN)	2,0 g (20 mN)
Tracking angle	20°	20°	20°
Internal impedance, DC resistance	0,75 kOhm	0,75 kOhm	0,75 Ohm
Internal inductance	450 mH	450 mH	450 mH
Recommended load resistance	47 kOhm	47 kOhm	47 kOhm
Recommended load capacitance	200-600 pF	200-600 pF	200-600 pF
Cartridge colour, body/stylus	Black/Black	Black/Black	Black/Black
Cartridge weight	5 g	5 g	5 g
Replacement stylus unit	Stylus 5E	Stylus D25M	Stylus 78

Ortofon OMP



TECHNICAL DATA	OMP 10	OMP 5E
Output voltage at 1000 Hz, 5cm/sec.	4 mV	4 mV
Channel balance at 1 kHz	2 dB	2 dB
Channel separation at 1 kHz	22 dB	22 dB
Channel separation at 15 kHz	15 dB	15 dB
Frequency range at - 3dB	20-25.000 Hz	20-25.000 Hz
Frequency response	20-20.000 Hz \pm 2 dB	20-20.000 Hz \pm 2 dB
Tracking ability at 315Hz at recommended tracking force	65 μ m	70 μ m
Compliance, dynamic, lateral	25 μ m/mN	20 μ m/mN
Stylus type	Elliptical	Elliptical
Stylus tip radius	r/R 8/18 μ m	r/R 8/18 μ m
Tracking force range	1,25-1,75 g (12,5-17,5 mN)	1,25-2,0 g (12,5-20,0 mN)
Tracking force, recommended	1,25 g (12,5 mN)	1,25 g (12,5 mN)
Tracking angle	20°	20°
Internal impedance, DC resistance	0,75 kOhm	0,75 kOhm
Internal inductance	450 mH	450 mH
Recommended load resistance	47 kOhm	47 kOhm
Recommended load capacitance	200-600 pF	200-600 pF
Cartridge colour, body/stylus	Black/Black	Black/Black
Cartridge weight	6 g	6 g
Replacement stylus unit	Stylus 10	Stylus 5E

ortofon
accuracy in sound